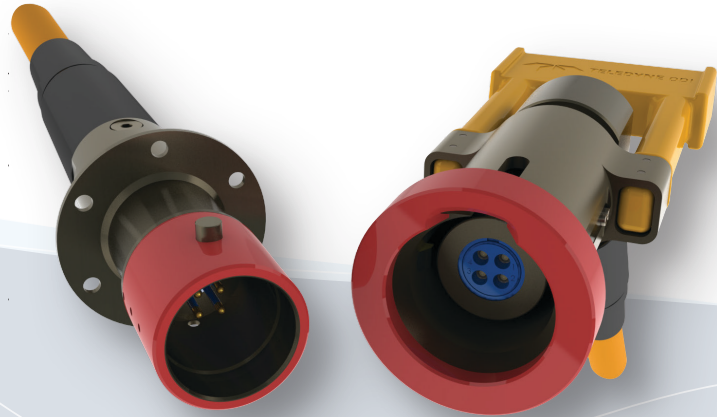


Nautilus™ WM1.7-30

Standard Wet-Mate Connector for Subsea Applications –
Available in 4, 7, & 12 Circuits

Teledyne ODI's Nautilus™ is a wetmateable, multi-channel electrical connector. First introduced in 1991, the Nautilus™ is recognized as the leading choice for high reliability underwater mateable electrical connectors. Nautilus™ has been utilized on thousands of projects at depths up to >19,000 ft. (6,000 m) and in diverse industries including Oil & Gas, Oceanography, and Navy & Defense. Nautilus™ is fully qualified to the latest industry standards and customer specifications including: Including, but not limited to; API 17F v4 and SEAFOM-TSD-02. Electrical harnesses utilizing Teledyne ODI's Oil-Filled Hose have also been qualified to these standards and specifications.

Nautilus™ incorporates a shuttle pin design with dual independent seals and oil reservoirs that provide a wiping action and redundancy in sealing for a reliable connection over many mate cycles. Over 191,000 Nautilus™ connectors have been delivered, accumulating more than 11 billion service hours.



4-Way Nautilus™ ROV Connectors

PRODUCT FEATURES

- Sensor Integration
- Subsea Junction Boxes
- Modular Connectorized Distribution Unit (MCDU)
- Pressure Balanced Oil Filled (PBOF) Hose



TELEDYNE MARINE
Everywhere you look™

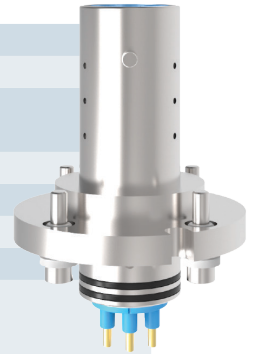
Nautilus™ WM1.7-30

Standard Wet-Mate Connector for Subsea Applications

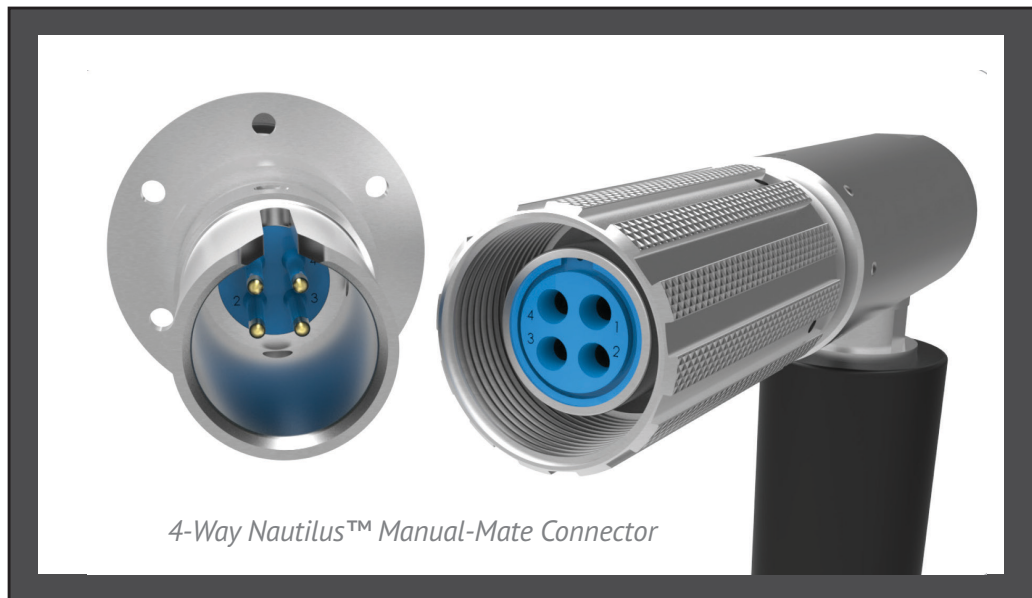


4-Way Nautilus™ Stab Connector

TECHNICAL SPECIFICATIONS



GENERAL SPECIFICATIONS	Operational Depth	20,997 ft (6,400 m)
	Operational Pressure	10,000 psi (689 bar)
	Operational Temperature	-5°C to +40°C (23°F to 104°F) seawater -10°C to +50°C (14°F to 122°F) air
	Storage Temperature	-30°C to +60°C (-22°F to 140°F)
	Subsea Mate/De-Mate Cycles	1,000 total cycles after factory testing
	Mate/De-Mate Force	112 lb/f (< 500N)
	Configurations	ROV, Stab, Manual-Mate & Penetrator
	Material	ROV configuration in Titanium Other materials available for Stab & Manual-Mate configurations (e.g. 316L SS, plastic, etc.)
	Design Life	30 Years
	Industry Compliance	API 17F v4, SEAFOM TSD-02
ELECTRICAL SPECIFICATIONS	Number of Circuits	4, 7 or 12
	Maximum Operational Current	30 Amps
	Maximum Operational AC Voltage	1.0 kV Phase-to-Ground 1.73 kV Phase-to-Phase
	Maximum Operational DC Voltage	3.3 kV
	Insulation Resistance	≥10 G @ 1 kVDC



4-Way Nautilus™ Manual-Mate Connector